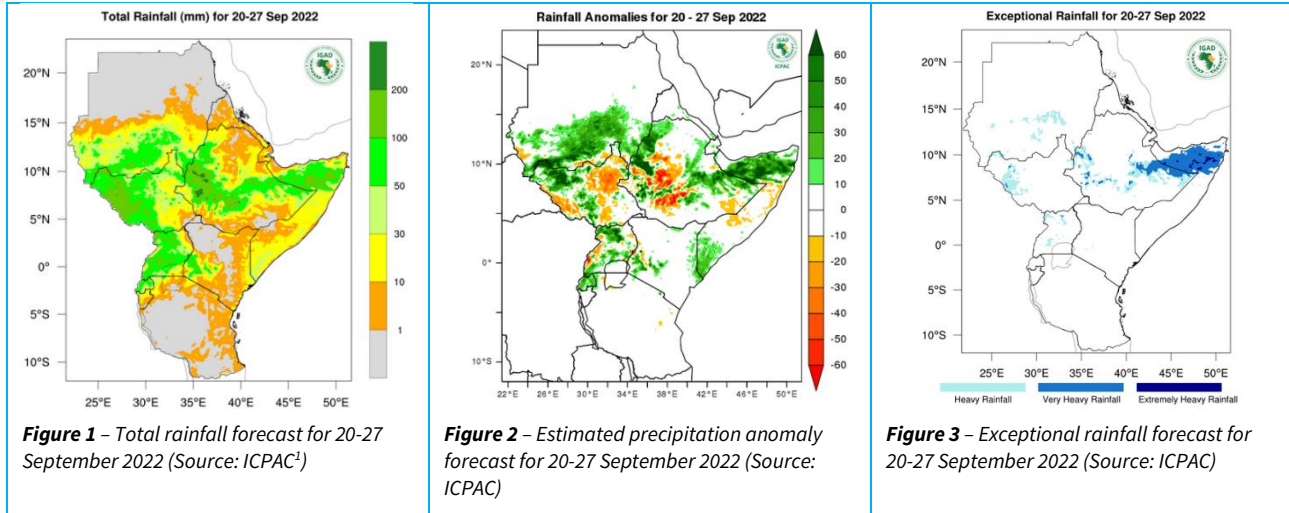


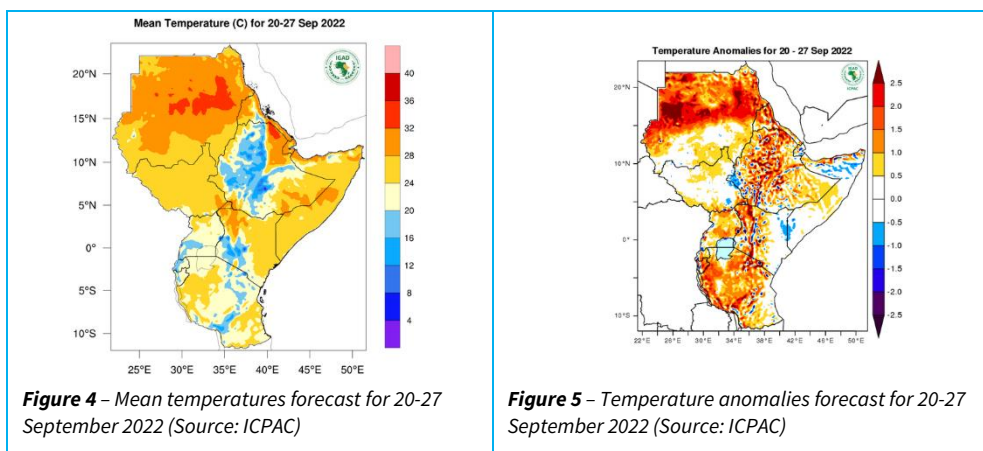


RAINFALL FORECAST



According to ICPAC, during the week of 20-27 September 2022, most of South Sudan is expected to experience moderate rainfall (50-200 mm), with the western half of the country specifically Western Bahr el Ghazal State, Northern Bahr el Ghazal State, Warrap State, Western Equatoria State, Unity State, Lakes State and the western part of Central Equatoria State are expected to experience moderate rainfall conditions (*dark green / light green areas in Figure 1*). Light rainfall of less than 50 mm is predicted for most of the eastern half of the country (*yellow / orange areas in Figure 1*), particularly Eastern Equatoria State, Jonglei State and most parts of Upper Nile State. During this period, wetter than average conditions are expected in most of South Sudan, with below average rainfall conditions (*orange/red areas in Figure 2*) predicted in parts of Western Equatoria State, Jonglei State, Upper Nile State and Central Equatoria State. Exceptionally heavy rainfall (*blue areas in Figure 3*) is expected in the north western parts of the country, especially the northern parts of Tambura County in Western Equatoria State; some parts of Raga and Wau counties in Western Bahr el Ghazal state; and parts of Aweil Center and Aweil West counties in Northern Bahr el Ghazal State.

TEMPERATURE FORECAST



¹ <https://www.icpac.net/weekly-forecast/>

According to ICPAC, from 20-27 September 2022, moderate temperatures of between 20 - 32 °C are expected over most of South Sudan (*Figure 4*). Warmer conditions of above 32 °C are expected in the south eastern parts of the country, particularly in the Kapoetas in Eastern Equatoria State (*orange areas in Figure 4*). Cooler than average temperatures are predicted around the eastern border of the country and in some parts of Lopa/Lafon County in Eastern Equatoria State (*blue areas in Figure 5*).



This weather bulletin is produced by FAO South Sudan's project (*Strengthening the resilience of vulnerable populations to food crises and climate stresses in South Sudan (PRO-SRVP)*) which is funded by the European Union.

Visit the CLIMIS Portal: <http://www.climis-southsudan.org>

View Rain Gauge Data on the CLIMIS Portal: http://www.climis-southsudan.org/agromet/rainfall_data

For more details, contact: FAO South Sudan: FAO-South-Sudan@fao.org