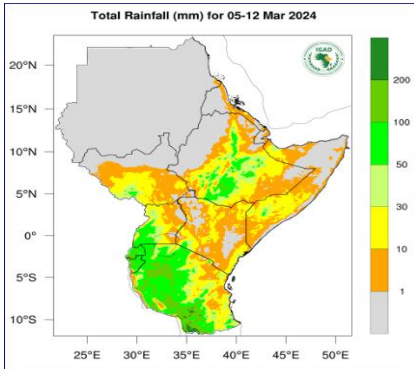
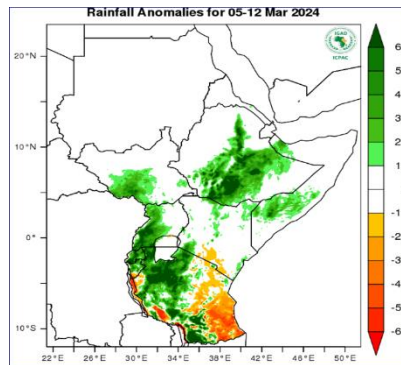


**Rainfall Forecast for 05-12 March 2024**



**Figure 1 – Total rainfall forecast for 05-12 Mar 24 (Source: ICPAC)**

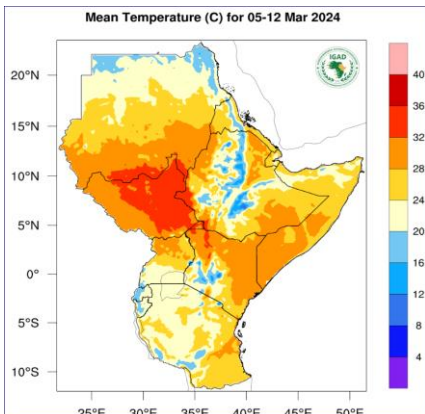


**Figure 2 –Rainfall anomalies forecast for 05-12 Mar 24 (Source: ICPAC)**

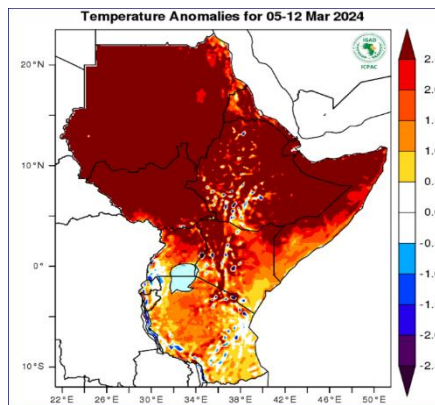
Figure 1 indicates dry conditions (colored grey) are expected in the northern parts of South Sudan, while light rainfall of less than 50 mm (colored yellow & orange) is expected in the central to the southern parts of the country such as, Greater Equatoria, Lakes, most of Jonglei and Warrap, Wau and Jur River in Western Bahr-el Ghazal, Aweil Centre and Aweil South in Northern Bahr-el-Ghazal, Pibor Administrative Area and southern Unity.

In terms of rainfall anomalies (Figure2), wetter than usual conditions (colored green) are expected over south-western South Sudan.

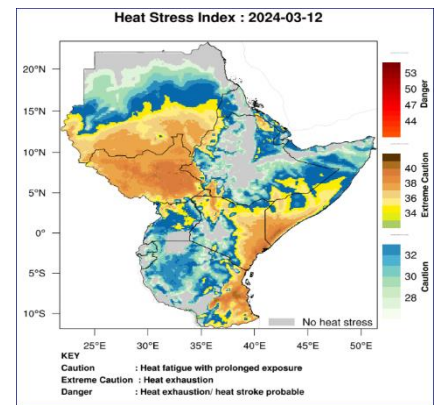
**Temperature Forecast for 05-12 March 2024**



**Figure 3 – Mean temperature forecast for - 05-12 Mar 24 (Source: ICPAC)**



**Figure 4 – Temperature Anomalies 05-12 Mar 24 (Source: ICPAC)**



**Figure 5– Heat Stress Index: 2024-03-12 05-12 Mar 24 (Source: ICPAC)**

Figure 3 above indicates moderate temperatures (20- 32 °C-colored orange) are expected over parts of western parts of South Sudan such as Western Equatoria, Western Bahr-el-Ghazal, western parts and southern parts of Central Equatoria, and most of Northern -Bahr-el-Ghazal, while high temperatures (above 32 °C-colored red) are expected on central to eastern regions of the country such as Jonglei and Pibor Administrative Area, Upper Nile, Unity, Northern parts of Eastern and Central Equatoria. Most of lakes and Warrap. Figure 5 above indicates elevated levels of heat stress (colored yellow) are expected in most parts of South Sudan.

According to the temperature anomalies map (Figure 4 above) warmer than usual temperatures (colored reddish) are predicted over most parts of South Sudan.

<sup>1</sup> <https://www.icpac.net/weekly-forecast/>

This weather bulletin is produced by FAO South Sudan’s projects’ i.e BREFONS, Funded by African Development Bank and ELRP & RALP Funded by World Bank, NORWEGIAN Project Funded by Norwegian Government and Swiss Agency for Development and Cooperation (SDC) Project, funded by Swiss government.

Visit the CLIMIS Portal: <http://www.climis-southsudan.org>

View Rain Gauge Data on the CLIMIS Portal: [http://www.climis-southsudan.org/agromet/rainfall\\_data](http://www.climis-southsudan.org/agromet/rainfall_data)

For more details, contact: FAO South Sudan: [FAO-South-Sudan@fao.org](mailto:FAO-South-Sudan@fao.org)