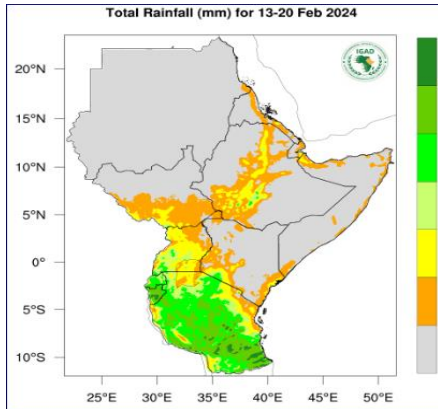
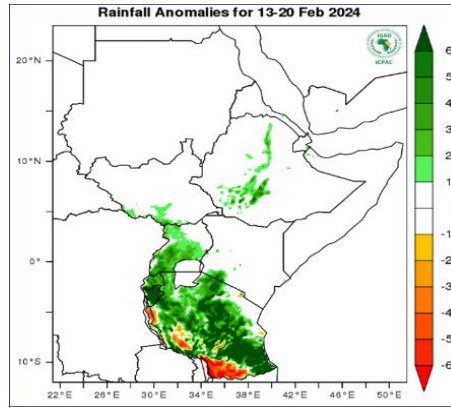


**Rainfall Forecast for 13-20 February 2024**



**Figure 1** – Total rainfall forecast for 13-20 Feb 24 (Source: ICPAC/ICPAC<sup>1</sup>)

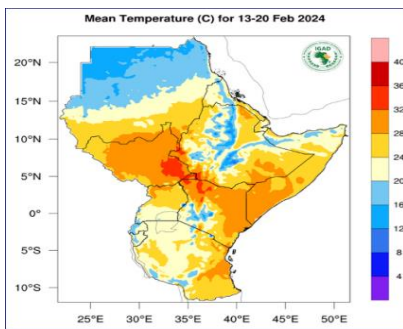


**Figure 2** – Rainfall anomalies forecast for 13- 20 Feb 24 (Source: ICPAC)

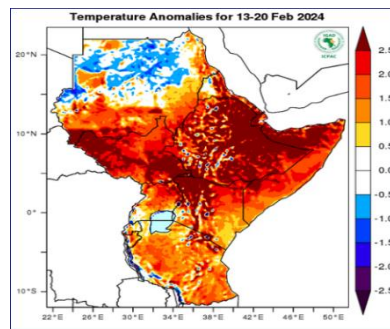
**Figure 1** indicates dry conditions (colored grey) are expected over most parts of South Sudan, with light rainfall (less than 50 mm) in the southern parts of the country such as: most parts of Greater Equatoria, and southern Pibor.

In terms of rainfall anomalies (Figure 2), wetter than usual conditions (colored green) are expected in southern most parts of South Sudan.

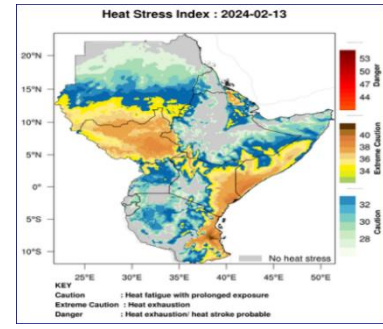
**Temperature Forecast for 13-20 February 2024**



**Figure 3** – Mean temperature forecast for - 13-20 Feb 24 (Source: ICPAC)



**Figure 4** – Temperature Anomalies for 13-20 Feb 24 (Source: ICPAC)



**Figure 5**– Heat Stress Index: 06-02- 2024 for 13-20 Feb 24 (Source: ICPAC)

Figure 3 above indicates moderate to high temperatures (20 - 32 °C, colored orange, yellow and red) are expected over most parts of South Sudan. Figure 5 above indicates elevated levels of heat stress (colored yellow) are expected in most parts of South Sudan.

According to the temperature anomalies map (Figure 4 above) warmer than usual temperatures (colored reddish) are expected over most parts of South Sudan.

<sup>1</sup> <https://www.icpac.net/weekly-forecast/>

This weather bulletin is produced by FAO South Sudan’s projects’ i.e BREFONS, Funded by African Development Bank and ELRP & RALP Funded by World Bank, NORWEGIAN Project Funded by Norwegian Government and Swiss Agency for Development and Cooperation (SDC) Project, funded by Swiss government.

Visit the CLIMIS Portal: <http://www.climis-southsudan.org>

View Rain Gauge Data on the CLIMIS Portal: [http://www.climis-southsudan.org/agromet/rainfall\\_data](http://www.climis-southsudan.org/agromet/rainfall_data)

For more details, contact: FAO South Sudan: [FAO-South-Sudan@fao.org](mailto:FAO-South-Sudan@fao.org)