

Rainfall Forecast for 19-26 March 2024

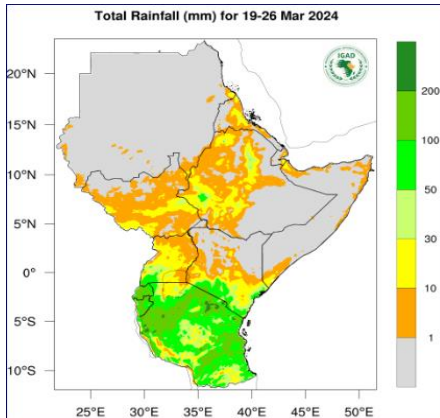


Figure 1 – Total rainfall forecast for 19-26 Mar 24 (Source: ICPAC¹)

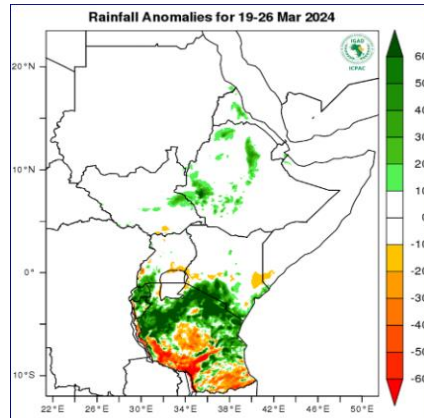


Figure 2 – Rainfall anomalies forecast for 19-26 Mar 24 (Source: ICPAC)

Figure 1 indicates light rainfall (less than 50mm- colored Orange and yellow) is expected in most parts of South Sudan while dry conditions are expected in Raga, most parts of Northern Bahr-el Ghazal, Warrap, Unity, and northern Upper Nile i.e. Renk, Melut and parts of Fashoda.

In terms of rainfall anomalies (Figure2), wetter than usual conditions (colored green) are expected over Pochalla and isolated areas in Lakes State.

Temperature Forecast for 19-26 March 2024

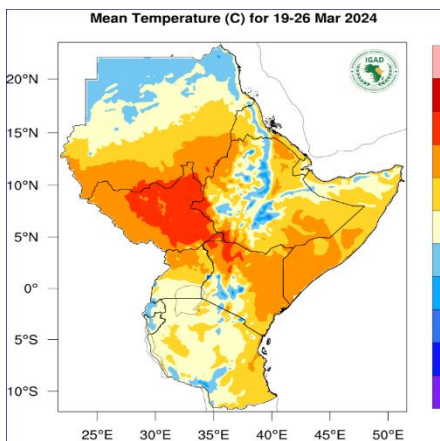


Figure 3 – Mean temperature forecast for 19-26 Mar 24 (Source: ICPAC)

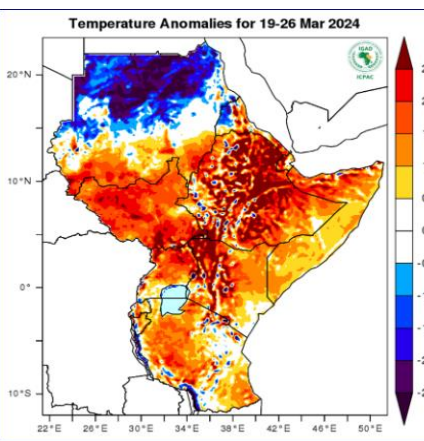


Figure 4 – Temperature Anomalies 19-26 Mar 24 (Source: ICPAC)

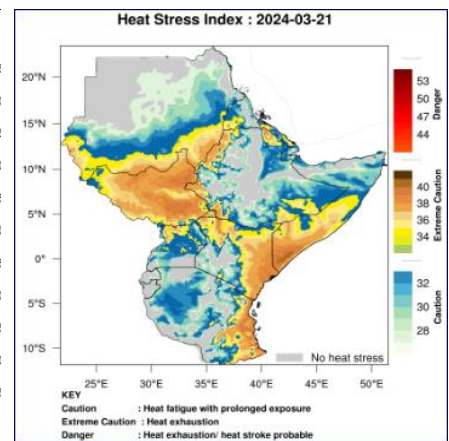


Figure 5– Heat Stress Index: 2024-03-21 19-26 Mar 24 (Source: ICPAC)

Figure 3 above indicates high temperatures (above 32 °C-colored red) are expected over most parts of South Sudan, while moderate to high temperatures (20-32 °C-colored orange) are expected over western regions, lower southern parts and northern parts of the Upper Nile of South Sudan specifically, Western Bahr-el-Gazal, Western Equatoria, south-western and southern parts of Central Equatoria, southern parts of Eastern Equatoria, Renk, Melut and parts of Fashoda counties in Upper Nile.

Figure 5 above indicates elevated levels of heat stress (colored yellow) are expected in most parts of South Sudan.

According to the temperature anomalies map (Figure 4 above) warmer than usual temperatures (colored reddish) are predicted over most parts of South Sudan.

¹ <https://www.icpac.net/weekly-forecast/>

This weather bulletin is produced by FAO South Sudan’s projects’ i.e BREFONS, Funded by African Development Bank and ELRP & RALP Funded by World Bank, NORWEGIAN Project Funded by Norwegian Government and Swiss Agency for Development and Cooperation (SDC) Project, funded by Swiss government.

Visit the CLIMIS Portal: <http://www.climis-southsudan.org>

View Rain Gauge Data on the CLIMIS Portal: http://www.climis-southsudan.org/agromet/rainfall_data

For more details, contact: FAO South Sudan: FAO-South-Sudan@fao.org