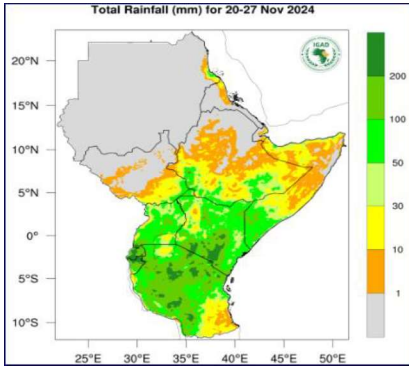
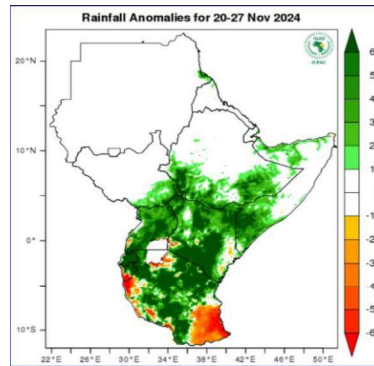


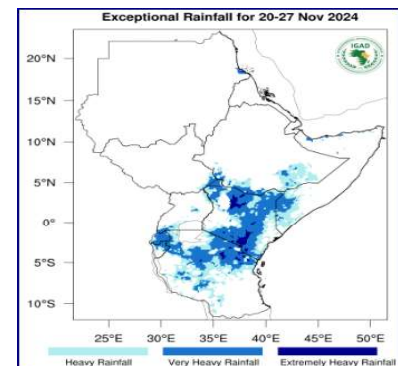
**Rainfall Forecast 20-27 November 2024**



**Figure 1** - Total rainfall forecast for 20-27 Nov 2024 (Source: ICPAC).



**Figure 2** - Rainfall anomalies forecast 20-27 Nov 2024 (Source: ICPAC).

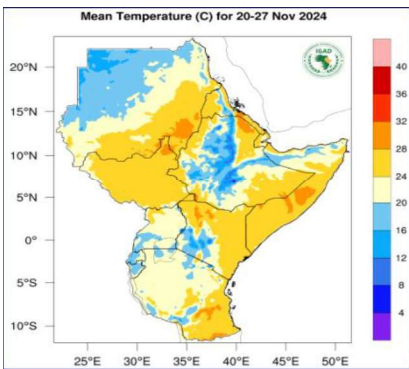


**Figure 3** - Exceptional rainfall for 20-27 Nov 2024 (Source: ICPAC).

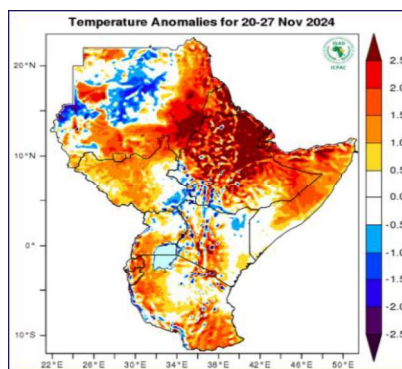
Figure 1 above indicates that **light rainfall** (less than 50- colored orange) is expected over parts of southwestern, southern and eastern parts of South Sudan, such as Jur River, part of Wau in Western Bahr-el Ghazal, much of Western Equatoria, Morobo, Yei, Lainya, Kajo-keji, Juba, Terekeka in Central Equatoria, much of eastern Equatoria, Pibor and Jonglei. The rest of the country remains dry. Figure 3 shows that **no heavy rainfall** will be expected over South Sudan.

In terms of rainfall anomalies (figure 2), **more than usual rainfall** (colored green) is expected over parts of south-eastern South Sudan.

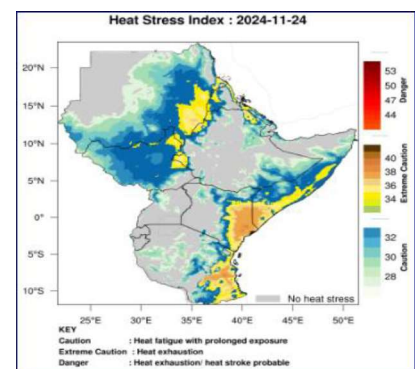
**Temperature Forecast for 20-27 November 2024**



**Figure 4** - Mean temperature forecast for 20-27 Nov 2024 (Source: ICPAC).



**Figure 5** - Temperature Anomalies for 20-27 Nov 2024 (Source: ICPAC).



**Figure 6** - Heat Stress Index: - 2024-11-24 20-27 Nov 2024 (Source: ICPAC).

Figure 4 above indicates that **moderate temperatures** of 20 °C –32 °C (colored yellow and orange) are expected over South Sudan. Figure 6 above shows that cautionary heat stress levels are expected in South Sudan this week.

According to temperature anomalies (figure 5), **warmer than usual temperatures** (colored orange) are expected over most parts of South Sudan. In comparison, cooler than usual temperatures (colored blue) are expected over parts of south-eastern South Sudan.

Source: <sup>1</sup> <https://www.icpac.net/weekly-forecast/>

This weather bulletin is derived from ICPAC weekly updates and funded by FAO South Sudan's projects, including the Program to Build Resilience for Food and Nutrition Security in the Horn of Africa (funded by the African Development Bank), the Emergency Locust Response Program and Resilient Agricultural Livelihoods Project (funded by the World Bank), with additional funding from the Norwegian and Swiss governments.

Visit the CLIMIS Portal: <http://www.climis-southsudan.org>

View Rain Gauge Data on the CLIMIS Portal: [http://www.climis-southsudan.org/agromet/rainfall\\_data](http://www.climis-southsudan.org/agromet/rainfall_data)

For more details, contact FAO South Sudan: [FAO-South-Sudan@fao.org](mailto:FAO-South-Sudan@fao.org)