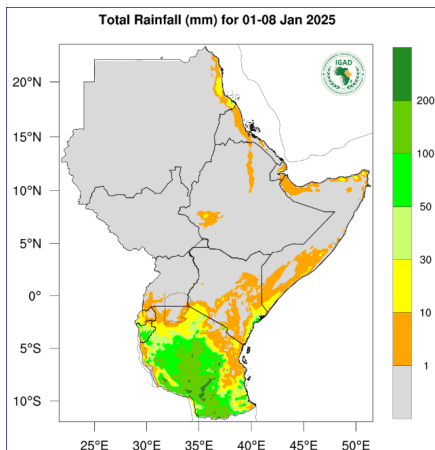
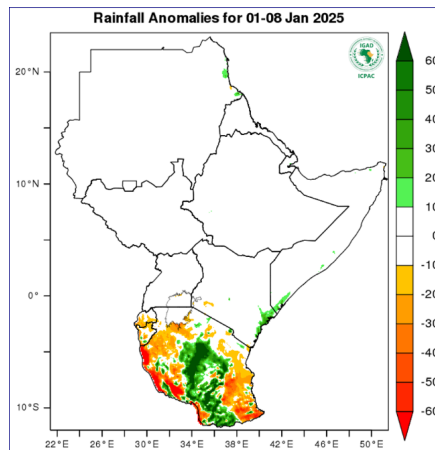


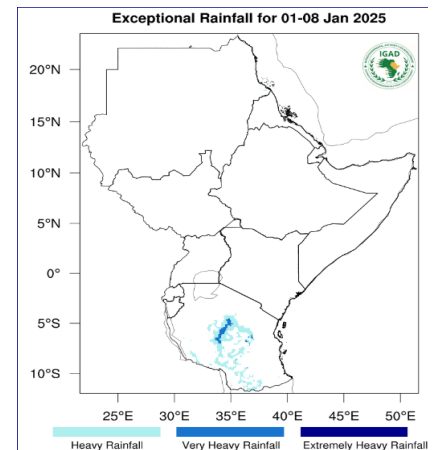
**Rainfall Forecast 01-08 January 2025**



**Figure 1 - Total rainfall forecast for 01-08 Jan 2025 (Source: ICPAC).**



**Figure 2 - Rainfall anomalies forecast 01-08 Jan 2025 (Source: ICPAC).**

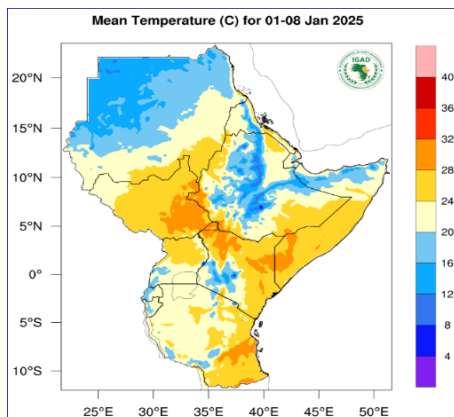


**Figure 3 - Exceptional rainfall for 01-08 Jan 2025 (Source: ICPAC).**

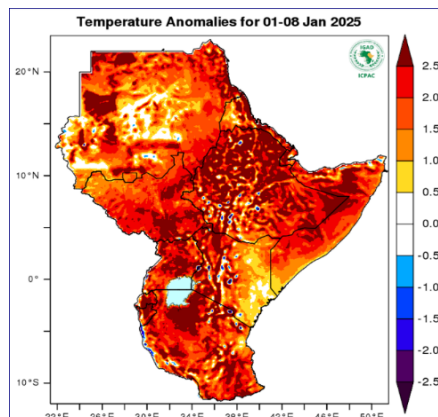
Figures 1 and 3 above indicate **dry conditions** (colored grey and cyan) are expected over South Sudan this week.

Regarding rainfall anomalies (figure 2), **dry conditions** (colored cyan) are expected over South Sudan, typical of this time of the year.

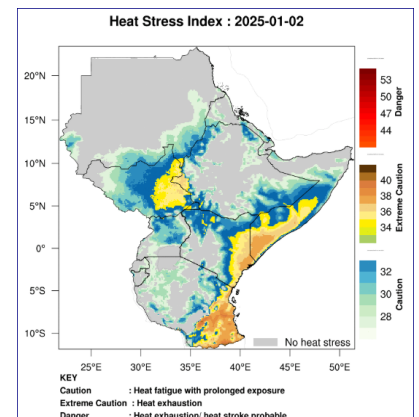
**Temperature Forecast for 01-08 January 2025**



**Figure 4 - Mean temperature forecast for 01-08 Jan 2025 (Source: ICPAC).**



**Figure 5 - Temperature anomalies for 01-08 Jan 2025 (Source: ICPAC).**



**Figure 6 - Heat stress index: - 2025-01-02 01-08 Jan 2025 (Source: ICPAC).**

Figure 4 above indicates that **moderate to high temperatures** of 20 °C –32 °C (colored orange) are expected over most parts of South Sudan with temperatures of 20 °C –24 °C expected in the northwestern part of the country, specifically in Raga and Aweil West counties. Figure 6 above indicates **cautionary heat stress** levels are expected over eastern South Sudan.

According to temperature anomalies (Figure 5), warmer-than-usual temperatures (colored orange) are expected over South Sudan.

Source: <sup>1</sup> <https://www.icpac.net/weekly-forecast/>

This weather bulletin is derived from ICPAC weekly updates and funded by FAO South Sudan's projects, including the Program to Build Resilience for Food and Nutrition Security in the Horn of Africa (funded by the African Development Bank), the Emergency Locust Response Program and Resilient Agricultural Livelihoods Project (funded by the World Bank), with additional funding from the Norwegian and Swiss governments.

Visit the CLIMIS Portal: <http://www.climis-southsudan.org>

View Rain Gauge Data on the CLIMIS Portal: [http://www.climis-southsudan.org/agromet/rainfall\\_data](http://www.climis-southsudan.org/agromet/rainfall_data)

For more details, contact FAO South Sudan: [FAO-South-Sudan@fao.org](mailto:FAO-South-Sudan@fao.org)