

### Rainfall Forecast 04-11 Feb 2026

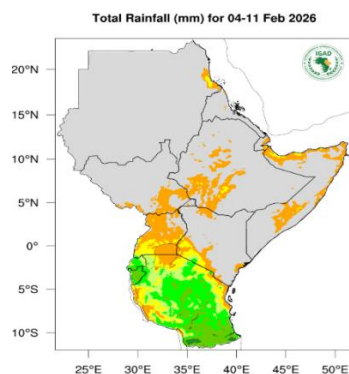


Figure 1 - Total rainfall forecast 04-11 Feb 26 (Source: ICPAC).

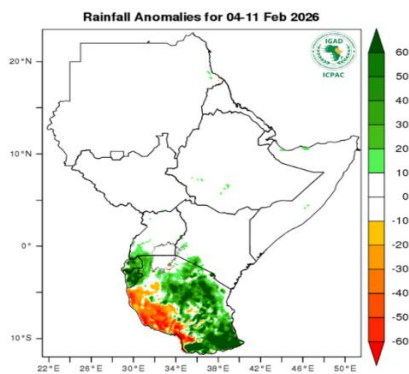


Figure 2 - Rainfall anomalies forecast 04-11 Feb 26 (Source: ICPAC).

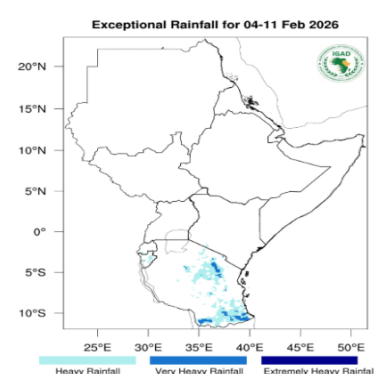


Figure 3 - Exceptional Rainfall forecast 04-11 Feb 26 (Source: ICPAC).

Figure 1 above indicates light rainfall of less than 10mm (colored orange) is expected in the southeastern parts of South Sudan, such as Pibor, Torit, Lafon, Magwi, the southern parts of Bor, and parts of Juba, including southern Mundri, while Figure 3 above indicates no exceptional or heavy rainfall (colored cyan) is expected in South Sudan. This rainfall is not an indication of the beginning of the rainfall season.

In terms of rainfall anomalies (Figure 2), the usual normal dry season conditions (colored cyan) are expected all over the country.

### Temperature Forecast for 04-Feb 2026

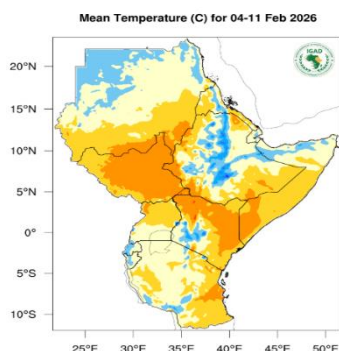


Figure 4 - Mean temperature forecast 04-11 Feb 26 (Source: ICPAC).

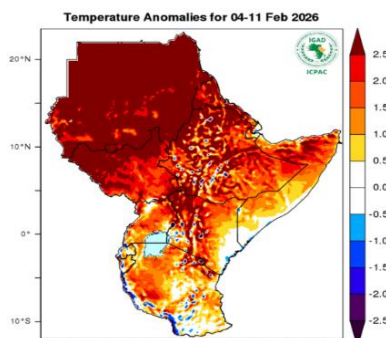


Figure 5 - Temperature Anomalies 04-11 Feb 26 (Source: ICPAC).

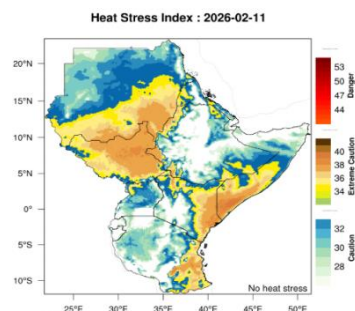


Figure 6 - Heat Stress 2026-02-11 04-11 Feb 26 (Source: ICPAC).

Figure 4 above indicates moderate to high temperatures (20-32°C-colored orange) are expected over most parts of South Sudan, while Figure 6 above indicates elevated heat stress in the “extreme caution” category expected over eastern South Sudan.

According to temperature anomalies (Figure 5), warmer-than-usual temperatures are expected over South Sudan this week.

Source: <sup>1</sup> <https://www.icpac.net/weekly-forecast/>

**About this bulletin:** This weather update is derived from the Intergovernmental Authority on Development (IGAD) Climate Prediction and Applications Centre’s (ICPAC) weekly forecasts and produced with the support of FAO South Sudan through projects funded by the African Development Bank, the World Bank, the European Union, and the Governments of Canada, Norway, and Switzerland.

Visit the CLIMIS Portal: <http://www.climis-southsudan.org>

View Rain Gauge Data on the CLIMIS Portal: [http://www.climis-southsudan.org/agromet/rainfall\\_data](http://www.climis-southsudan.org/agromet/rainfall_data)

For more details, contact FAO South Sudan: [FAO-South-Sudan@fao.org](mailto:FAO-South-Sudan@fao.org)