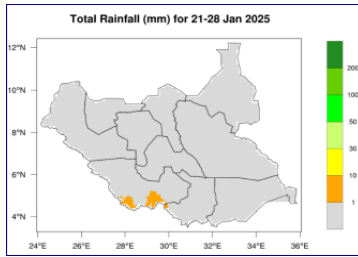


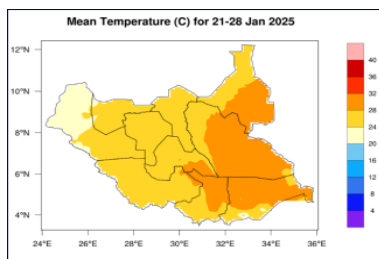
### Rainfall Forecast 21-28 January 2025



**Figure 1** -Total rainfall forecast for 21 -28 Jan 2025 (Source: SSMD/ICPAC).

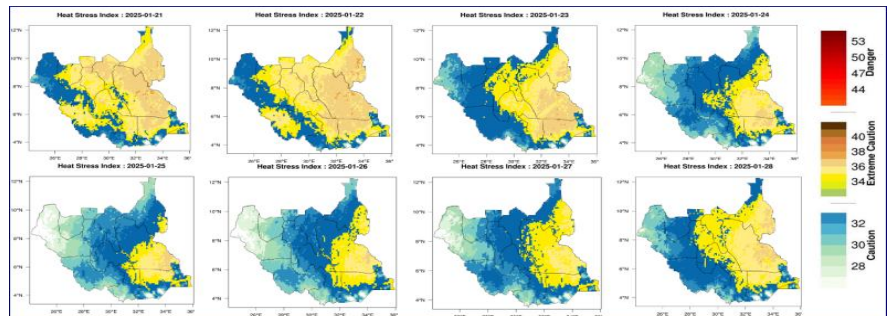
**Figure 1** indicates that most of South Sudan will experience dry conditions during this period (21 to 28 January 2025), with minimal or no rainfall expected across the country except for light rain over the Western Equatoria. This is typical of the dry season in South Sudan, which is characterized by low rainfall and high temperatures.

### Temperature Forecast for 21-28 January 2025



**Figure 2** - Mean temperature forecast for 21-28 Jan 2025 (Source: SSMD/ICPAC).

**Figure 2** indicates that most of South Sudan is expected to experience mean temperatures ranging from 20°C to 28°C (colored light orange) during the week of 21–28 January 2025. However, mean temperatures exceeding 28°C (colored dark orange) are expected over northern to eastern parts of Central Equatoria, most of Eastern Equatoria, the Pibor Administrative Area, most of Jonglei, and southern to eastern parts of Upper Nile State.



**Figure 3:** Heat Stress Index 21-28 Jan 2025 (Source: SSMD/ICPAC).

**Figure 3** depicts three levels of the heat stress index (Caution, Extreme Caution, and Danger) expected over South Sudan from 21–28 January 2025:

- **Caution** (light blue to blue): Indicates a moderate level of risk, suggesting potential hazards that require awareness and careful action. It serves as a warning to proceed with care and remain alert.
- **Extreme Caution:** (yellow to light red) represents a higher level of risk compared to Caution. This implies a more dangerous or precarious situation that demands heightened awareness and vigilance.
- **Danger** (red): Represents the most serious warning level, indicating an imminent threat or hazard that poses significant risks to safety or life. Immediate action is necessary to avoid injury or harm.

### ADVISORY

- Public awareness campaigns should focus on staying hydrated, limiting outdoor activities during peak heat hours, and wearing light, breathable clothing.
- Encourage efficient water use and pre-position resources in areas forecasted to experience hotter and drier conditions.
- Stay updated on advisories from meteorological services, especially in regions expecting hotter and drier conditions.
- Regularly monitor weekly forecast updates from the meteorological service.

Source: <sup>1</sup> South Sudan Meteorology Directorate and <https://www.icpac.net/weekly-forecast/>

This weather bulletin is derived from ICPAC weekly updates and funded by FAO South Sudan's projects, including the Program to Build Resilience for Food and Nutrition Security in the Horn of Africa (funded by the African Development Bank), the Resilient Agricultural Livelihoods Project (funded by the World Bank), and the funding from the Norwegian and Swiss governments.

Visit the CLIMIS Portal: <http://www.climis-southsudan.org>; and View Rain Gauge Data on the CLIMIS Portal: [http://www.climis-southsudan.org/agromet/rainfall\\_data](http://www.climis-southsudan.org/agromet/rainfall_data)

For more details, contact FAO South Sudan: [FAO-South-Sudan@fao.org](mailto:FAO-South-Sudan@fao.org)