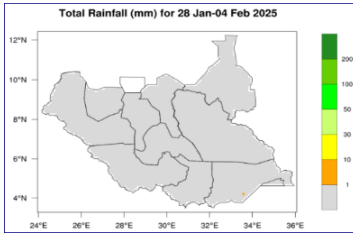


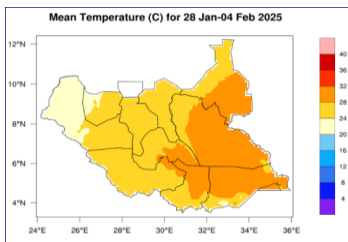
**Rainfall Forecast 28 JANUARY - 04 FEBRUARY 2025**



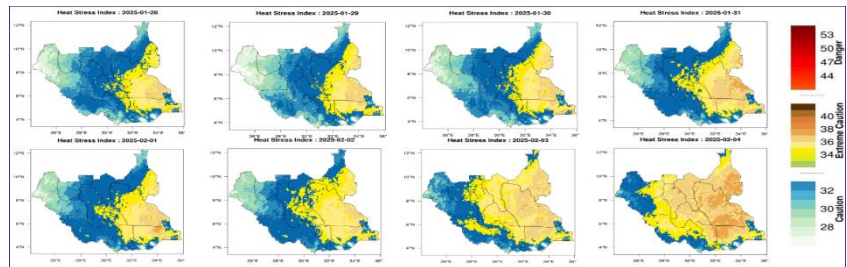
**Figure 1:** Total rainfall forecast for 28 Jan - 04 Feb 2025 (source: SSMD/ICPAC).

**Figure 1** indicates that most of South Sudan will experience dry conditions during this period (28 January to 04 February 2025), with minimal or no rainfall expected across the country, except for light rain over the Eastern Equatoria. This is typical of the dry season in South Sudan, which is characterized by low rainfall and high temperatures.

**Temperature Forecast for 28 JANUARY - 04 FEBRUARY 2025**



**Figure 2:** Mean temperature forecast for 28 Jan - 04 Feb 2025 (source: SSMD/ICPAC).



**Figure 3:** Heat Stress Index 28 Jan - 04 Feb 2025 (source: SSMD/ICPAC).

**Figure 2** indicates that most of South Sudan is expected to experience mean temperatures ranging from 20°C to 28°C (colored light orange) during the week of 28 January - 04 February 2025. However, mean temperatures exceeding 28°C (colored orange) are expected over parts of Central Equatoria, most of Eastern Equatoria, the Pibor Administrative Area, most of Jonglei, east of Lake State, and southern to eastern parts of Upper Nile State.

**Figure 3** depicts three levels of the heat stress index (Caution, Extreme Caution, and Danger) are expected over South Sudan from 28 January - 04 February 2025:

- **Caution (light blue to blue):** Indicates a moderate level of risk, suggesting potential hazards that require awareness and careful action. It serves as a warning to proceed with care and remain alert.
- **Extreme Caution (orange):** Represents a higher level of risk compared to Caution. This implies a more dangerous or precarious situation that demands heightened awareness and vigilance.
- **Danger (red):** Represents the most serious warning level, indicating an imminent threat or hazard that poses significant risks to safety or life. Immediate action is necessary to avoid injury or harm.

**ADVISORY**

- Encourage the community to stay hydrated and wear light-breathable clothing in areas forecasted to experience hotter and drier conditions.

Source: <sup>1</sup> South Sudan Meteorology Directorate and <https://www.icpac.net/weekly-forecast/>

This weather bulletin is derived from ICPAC weekly updates and funded by FAO South Sudan's projects, including the Program to Build Resilience for Food and Nutrition Security in the Horn of Africa (funded by the African Development Bank), the Resilient Agricultural Livelihoods Project (funded by the World Bank), and the funding from the Norwegian and Swiss governments.

Visit the CLIMIS Portal: <http://www.climis-southsudan.org>; and View Rain Gauge Data on the CLIMIS Portal: [http://www.climis-southsudan.org/agromet/rainfall\\_data](http://www.climis-southsudan.org/agromet/rainfall_data)

For more details, contact FAO South Sudan: [FAO-South-Sudan@fao.org](mailto:FAO-South-Sudan@fao.org)