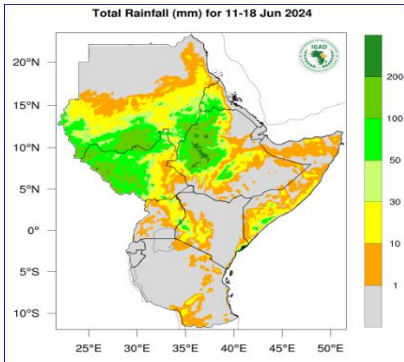
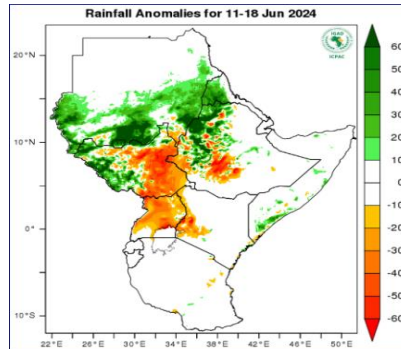


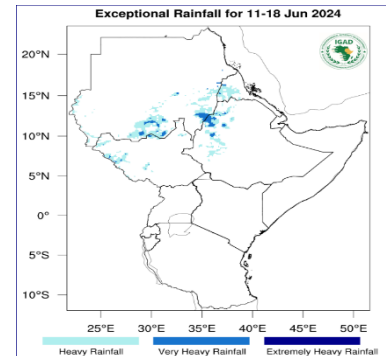
**Rainfall Forecast for 11-18 June 2024**



**Figure 1 – Total rainfall forecast for 11-18 June 2024 (Source: ICPAC)**



**Figure 2 –Rainfall anomalies forecast for 11-18 June 2024 (Source: ICPAC)**

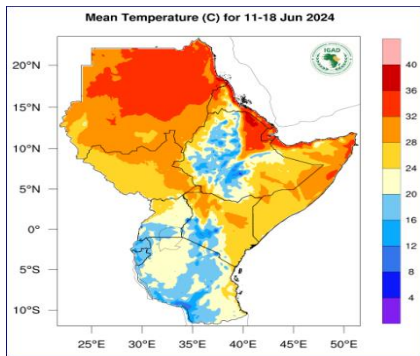


**Figure 3 –Exceptional rainfall for 11-18 June 2024 (Source: ICPAC)**

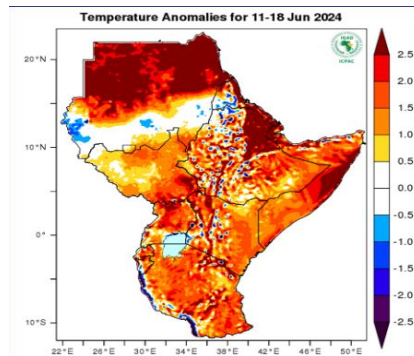
Figure 1 above indicates heavy rainfall (100-200 mm - colored green) is expected over central to western South Sudan such as Wau county, isolated areas in Raga and Jur River counties of Western Bahr-el-Ghazal, Tambura, Ezo, parts of Nagero and isolated areas in Yambio in Western Equatoria State, isolated areas in Lates and western parts of Central Equatoria while most of the western and northern parts of Sout Sudan (colored light green) expected to experience moderate rainfall (50-100 mm). Eastern parts of South Sudan (colored yellow to orange) are expected to experience light rainfall of less than 50 mm precisely in Eastern Equatoria, Jonglei and Pibor Administration Area, most of central Equatoria, southern Maban, Maiwut, Fangak, Nasir, and Longechuk in Upper Nile State. Figure 3 indicates that rainfall amount exceeding the top 10 percent (colored blue) on record is expected over western South Sudan which is likely to lead to flooding in these areas.

In terms of rainfall anomalies (Figure 2), more than usual rainfall conditions (colored green) are expected over western South Sudan while less than usual rainfall is expected in eastern South Sudan.

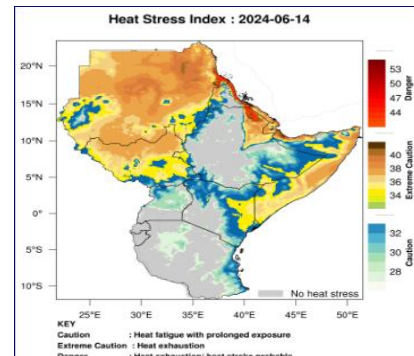
**Temperature Forecast for 11-18 June 2024**



**Figure 4– Mean temperature forecast for - 11-18 June 24 (Source: ICPAC)**



**Figure 5 – Temperature Anomalies 11-18 June 24 (Source: ICPAC)**



**Figure 6– Heat Stress Index: 2024-06-14 11-18 June 24 (Source: ICPAC)**

<sup>1</sup> <https://www.icpac.net/weekly-forecast/>

Figure 4 above indicates that, a moderate temperature of 24°C – 32°C (colored yellow to orange) is predicted over most parts of South Sudan. Figure 6 above indicates that, South Sudan should be extremely cautious of the looming heat stress condition that the country may be exposed to this week and the population are advised to stay hydrated.

According to temperature anomalies (Figure 5) warmer than usual temperatures are predicted over most parts of South Sudan.

This weather bulletin is produced by FAO South Sudan’s projects’ e.g., BREFONS, funded by the African Development Bank and ELRP & RALP funded by the World Bank, as well as funding from the governments of Norway and Switzerland.

Visit the CLIMIS Portal: <http://www.climis-southsudan.org>

View Rain Gauge Data on the CLIMIS Portal: [http://www.climis-southsudan.org/agromet/rainfall\\_data](http://www.climis-southsudan.org/agromet/rainfall_data)

For more details, contact: FAO South Sudan: [FAO-South-Sudan@fao.org](mailto:FAO-South-Sudan@fao.org)