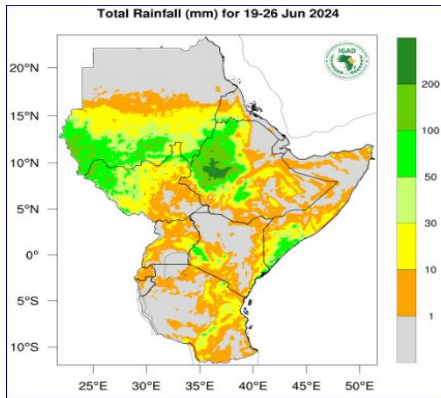
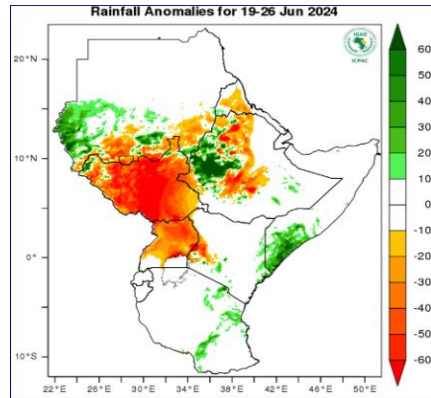


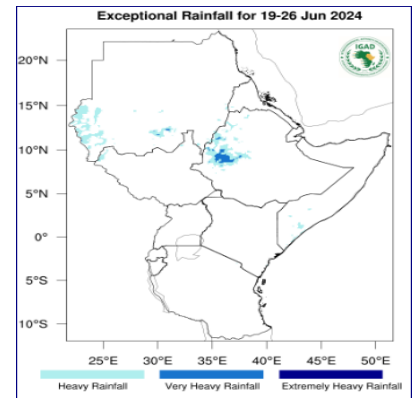
**Rainfall Forecast for 19-26 June 2024**



**Figure 1** – Total rainfall forecast for 19-26 June 2024 (Source: ICPAC)



**Figure 2** –Rainfall anomalies forecast. for 19-26 June 2024 (Source: ICPAC)

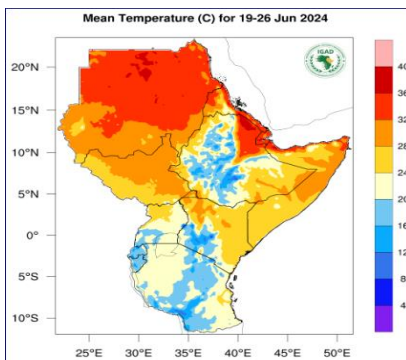


**Figure 3** –Exceptional rainfall for 19-26 June 2024 (Source: ICPAC)

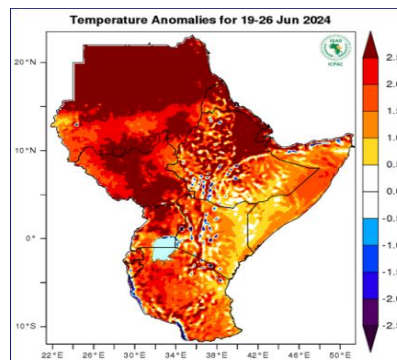
Figure 1 above indicates heavy rainfall (50-100 mm-colored light green) is expected over parts of central to north-western South Sudan such as, Raga, isolated parts of Wau and Jur River counties in Western Bahr-el-Ghazal; parts of Lakes; Aweil West, isolated areas in Aweil South and Aweil Centre in Northern Bahr-el-Ghazal; and isolated areas in Twic in Warrap State; as well as isolated areas of Malakal and Maban in Upper Nile while most of the South Sudan (colored yellow and Orange) are expected to received light rainfall of less than 50 mm. Most of Kapoeta East, Kapoeta South, Budi and isolated areas in Lafon (colored grey) are expected to receive less than 1.0 mm rainfall. Figure 3 indicates no exceptional rainfall expected over South Sudan.

In terms of rainfall anomalies (Figure2), less than usual rainfall conditions (colored red) are expected over South Sudan

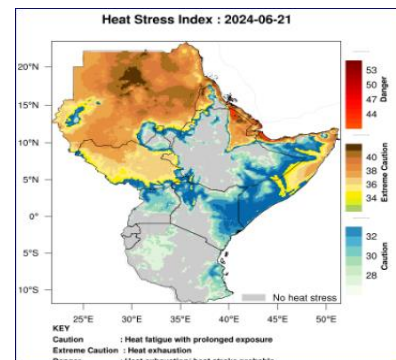
**Temperature Forecast for 19-26 June 2024**



**Figure 4**– Mean temperature forecast for - 19-26 June 24 (Source: ICPAC)



**Figure 5** – Temperature Anomalies 19-26 June 24 (Source: ICPAC)



**Figure 6**– Heat Stress Index: 2024-06-21 19-26 June 24 (Source: ICPAC)

Figure 4 above indicates that, moderate temperature of 24°C – 32°C (colored yellow to orange) expected over South Sudan. Figure 6 above indicates that, South Sudan should be extremely cautious this week of the looming heat stress condition that the country may be exposed to and the population are advised to stay hydrated.

According to temperature anomalies (figure 5) warmer than usual temperatures are predicted across South Sudan.

Source: <sup>1</sup> <https://www.icpac.net/weekly-forecast/>

This weather bulletin is produced by FAO South Sudan’s projects’ i.e. BREFONS, Funded by African Development Bank and ELRP & RALP Funded by World Bank, NORWEGIAN Project Funded by Norwegian Government and Swiss Agency for Development and Cooperation (SDC) Project, funded by Swiss Government.

Visit the CLIMIS Portal: <http://www.climis-southsudan.org>

View Rain Gauge Data on the CLIMIS Portal: [http://www.climis-southsudan.org/agromet/rainfall\\_data](http://www.climis-southsudan.org/agromet/rainfall_data)

For more details, contact: FAO South Sudan: [FAO-South-Sudan@fao.org](mailto:FAO-South-Sudan@fao.org)