

Rainfall Forecast for 21-28 May 2024

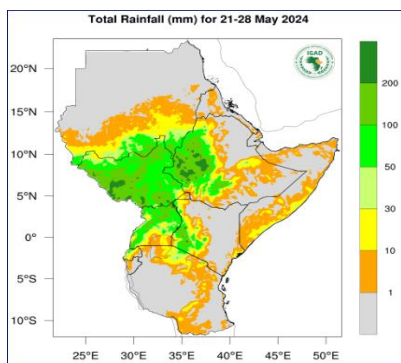


Figure 1 – Total rainfall forecast for 21-28 May 2024 (Source: ICPAC¹)

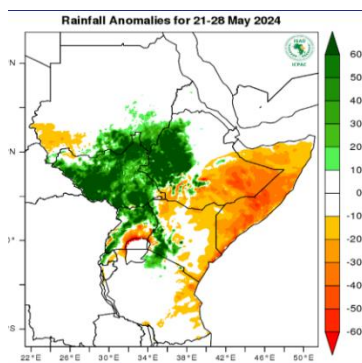


Figure 2 – Rainfall anomalies forecast for 21-28 May 2024 (Source: ICPAC)

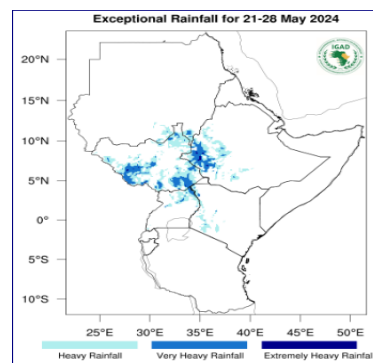


Figure 3 – Exceptional rainfall for 21-28 May 2024 (Source: ICPAC)

Figure 1 indicates that heavy rainfall of more than 200 mm (colored dark green) is expected over western South Sudan precisely in Ezo, part of Nagero, Maridi and part of Tambura Tambura in Western Equatoria and south-western part of Juba county in Central Equatoria while moderate rainfall (less than 50 -200 mm-colored green) is expected over most parts of South Sudan .Figure 3 above indicates exceptionally heavy rainfall (exceeding the top 10% on record-colored blue) are expected in western and part of southern South Sudan and western Ethiopia. This is likely to increase water flow into Yabus River in Maban, Daga river in Maiwut. Heavy rainfall will increase volume of water flowing into the Nile and which will cause flash floods in the riverine areas along the Nile and in Longechuk and eastern part of Nasir County from water flowing from Ethiopian hills into eastern parts of South Sudan.

In terms of rainfall anomalies (Figure 2), more than usual rainfall conditions (colored green) is expected over most parts of South Sudan.

Temperature Forecast for 21-28 May 2024

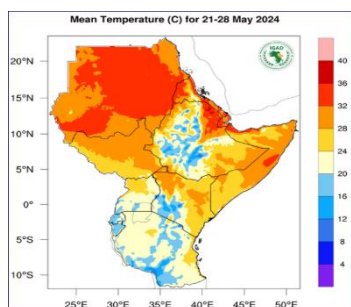


Figure 4– Mean temperature forecast for 21-28 May 24 (Source: ICPAC)

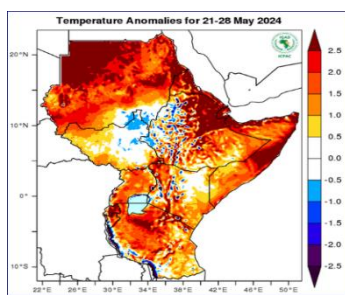


Figure 5 – Temperature Anomalies 21-28 May 24 (Source: ICPAC)

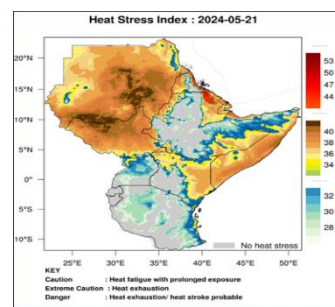


Figure 6– Heat Stress Index: 2024-05-21 21-28 May 24 (Source: ICPAC)

Figure 4 above indicates moderate temperatures (24 - 32 °C-colored orange) expected over most parts of South Sudan. Figure 6 above indicates elevated levels of heat stress are expected in most parts of the northern areas of South Sudan.

According to the temperature anomalies map (Figure 5 above) warmer than usual temperatures (colored orange) are expected in over most parts of South Sudan while cooler than usual temperatures (colored blue) is forecasted over few regions in north-eastern South Sudan.

¹ <https://www.icpac.net/weekly-forecast/>

This weather bulletin is produced by FAO South Sudan’s projects’ i.e BREFONS, Funded by African Development Bank and ELRP & RALP Funded by World Bank, NORWEGIAN Project Funded by Norwegian Government and Swiss Agency for Development and Cooperation (SDC) Project, funded by Swiss government.

Visit the CLIMIS Portal: <http://www.climis-southsudan.org>

View Rain Gauge Data on the CLIMIS Portal: http://www.climis-southsudan.org/agromet/rainfall_data

For more details, contact: FAO South Sudan: FAO-South-Sudan@fao.org