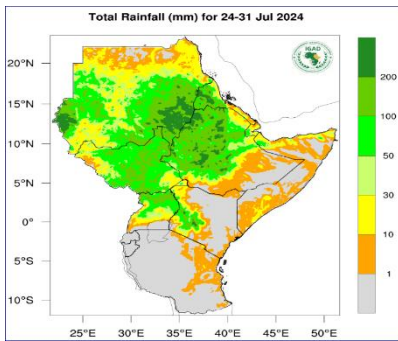
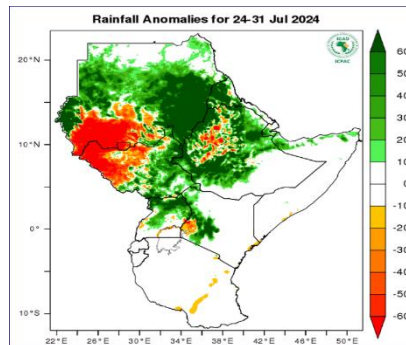


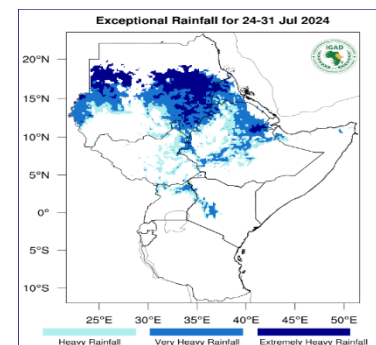
**Rainfall Forecast for 24-31 July 2024**



**Figure 1** – Total rainfall forecast for 24-31 July 2024 (Source: ICPAC)



**Figure 2** –Rainfall anomalies forecast. for 24-31 July 2024 (Source: ICPAC)

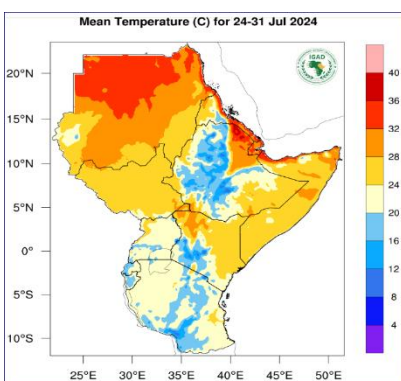


**Figure 3** –Exceptional rainfall for 24-31 July 2024 (Source: ICPAC)

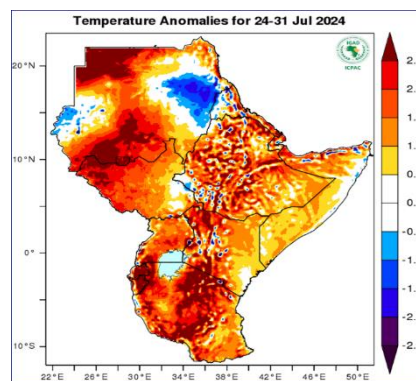
Figure 1 above indicates moderate rainfall (50-100 mm-colored green) expected over most parts of South Sudan while light rainfall (less than 50mm-colored orange) expected in the -western parts of South Sudan such as Raga and Wau counties in Western Bahr-el-Ghazal, Ezo and Tambura in Western Equatoria State, eastern parts of Eastern Equatoria State such as greater Kapoeta, Budi, Ikotos. Prats of Torit and Lopa/Lafon counties. Figure 3 above indicates that heavy rainfall (colored light blue) expected in isolated areas in the eastern South Sudan.

In terms of rainfall anomalies (Figure2), more than usual rainfall (colored green) expected in eastern South Sudan while less than usual rainfall (colored orange) expected in western South Sudan.

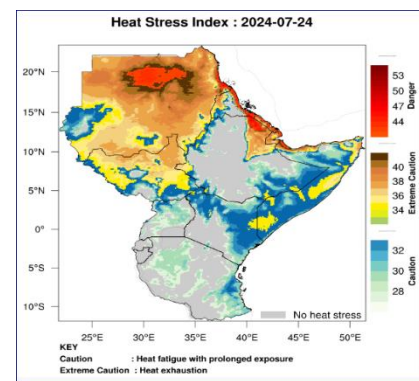
**Temperature Forecast for 24-31 July 2024**



**Figure 4**– Mean temperature forecast for 24-31 July 24 (Source: ICPAC)



**Figure 5** – Temperature Anomalies 24-31 July 24 (Source: ICPAC)



**Figure 6**– Heat Stress Index: 2024-07-31 24-31 July 24 (Source: ICPAC)

Figure 4 above indicates, moderate temperature of 20°C – 32°C (colored orange) expected over South Sudan. Figure 6 above indicates that, no incidence of heat stress is expected over South Sudan this week.

According to temperature anomalies (Figure 5) warmer than usual temperatures expected over most parts of South Sudan while normal temperatures (colored cyan) expected over parts of south-eastern South Sudan such as most of Pibor Administrative Area; parts of Kapoeta South, Budi, Lopa-lafon in Eastern Equatoria State

Source: <sup>1</sup> <https://www.icpac.net/weekly-forecast/>

This weather bulletin is produced by FAO South Sudan’s projects’ i.e. BREFONS, Funded by African Development Bank and ELRP & RALP Funded by World Bank, NORWEGIAN Project Funded by Norwegian Government and Swiss Agency for Development and Cooperation (SDC) Project, funded by Swiss Government.

Visit the CLIMIS Portal: <http://www.climis-southsudan.org>

View Rain Gauge Data on the CLIMIS Portal: [http://www.climis-southsudan.org/agromet/rainfall\\_data](http://www.climis-southsudan.org/agromet/rainfall_data)

For more details, contact: FAO South Sudan: [FAO-South-Sudan@fao.org](mailto:FAO-South-Sudan@fao.org)